



Child and Family Charities seeks your help to create a campus of services for children, youth and families at a comprehensive, centralized location in mid-Michigan. Our timing is critical. Our commitment is unwavering.

A Better Mid-Michigan for Children, Youth & Families

Since 1911,

Child and Family Charities provides outreach to

15,000 + children, youth & families annually



through its **6 divisions** and **28+ programs.**

We need you!

Help us fund our new goals to address immediate needs that have reached crisis levels.

The Need



School attendance has **plunged by** since the pandemic

10% students

Every year **1,000** youth experience homelessness



Mental health service needs have **increased** dramatically

The Vision

Creation of a youth drop-in center, a safe haven to connect with healthy supports & help young people at risk of being trafficked

Shelter services for youth at McRee House



The Family Growth Center to help fill the childcare gap for low-income families

Creating new flexible spaces for other non-profits to utilize

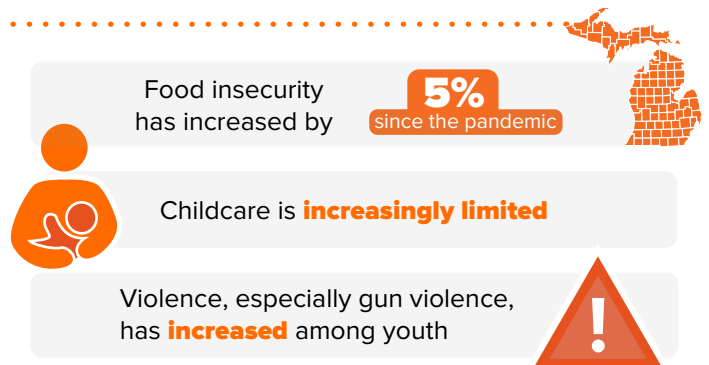


A centrally located, community-based location to increase our reach

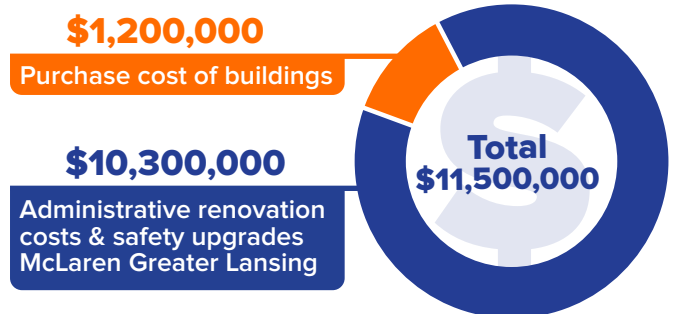
Serve youth & families with behavioral health prevention



TEAM Attendance/Tuancy Outreach program for at-risk youth



The Cost



Our Pandemic Response

Expanded services:

- Substance abuse prevention programs
- Suicide prevention
- Mental health services
- Trauma training for staff
- Teacher support and training
- Family Resource Coordinator

Created community connections :

- Food deliveries to families
- Basic needs
 - Diapers
 - Formula
 - Personal hygiene items
- Extended support for children