



Child and Family Charities seeks your help to create a campus of services for children, youth and families at a comprehensive, centralized location in mid-Michigan. Our timing is critical. Our commitment is unwavering.

A Better Mid-Michigan for Children, Youth & Families

Since 1911,

Child and Family Charities provides outreach to

15,000+ children, youth & families annually

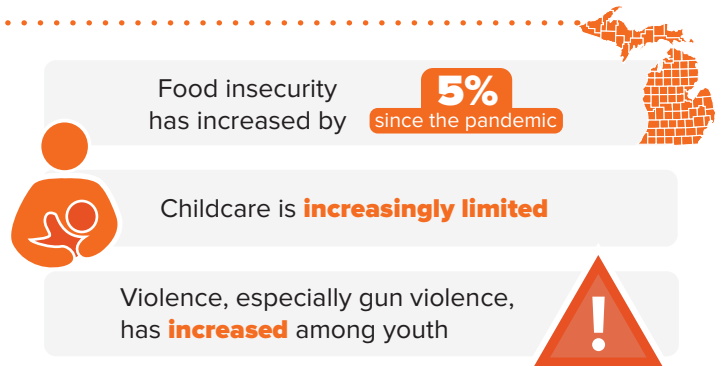
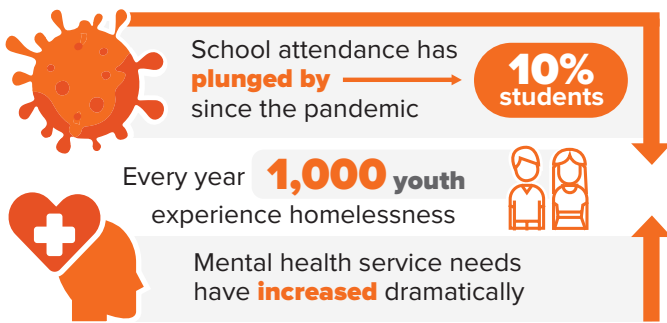


through its **6 divisions** and **28+ programs.**

We need you!

Help us fund our new goals to address immediate needs that have reached crisis levels.

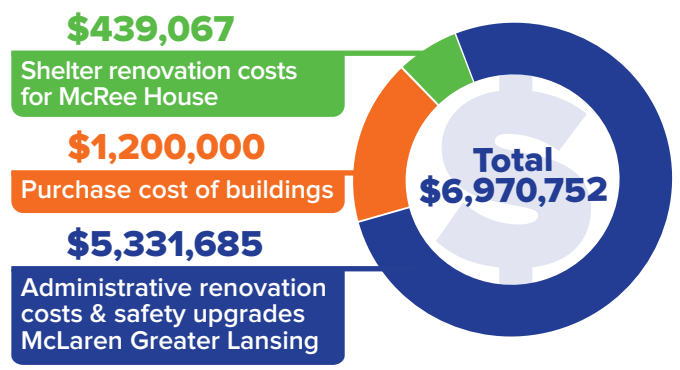
The Need



The Vision

- Creation of a youth drop-in center, a safe haven to connect with healthy supports & help young people at risk of being trafficked
- Shelter services for youth at McRee House
- The Family Growth Center to help fill the childcare gap for low-income families
- Creating new flexible spaces for other non-profits to utilize
- A centrally located, community-based location to increase our reach
- Serve youth & families with behavioral health prevention
- TEAM** Attendance/Truancy Outreach program for at-risk youth

The Cost



Our Pandemic Response

- Expanded services:**
 - Substance abuse prevention programs
 - Suicide prevention
 - Mental health services
 - Trauma training for staff
 - Teacher support and training
 - Family Resource Coordinator
- Created community connections:**
 - Food deliveries to families
 - Basic needs
 - Diapers
 - Formula
 - Personal hygiene items
 - Extended support for children